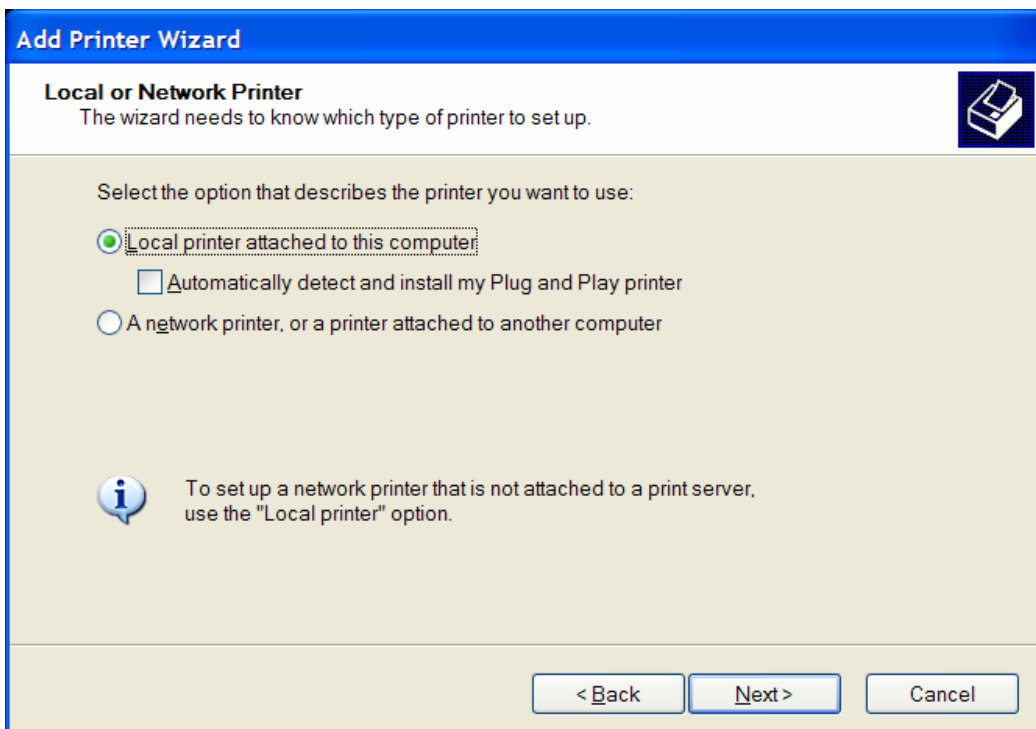
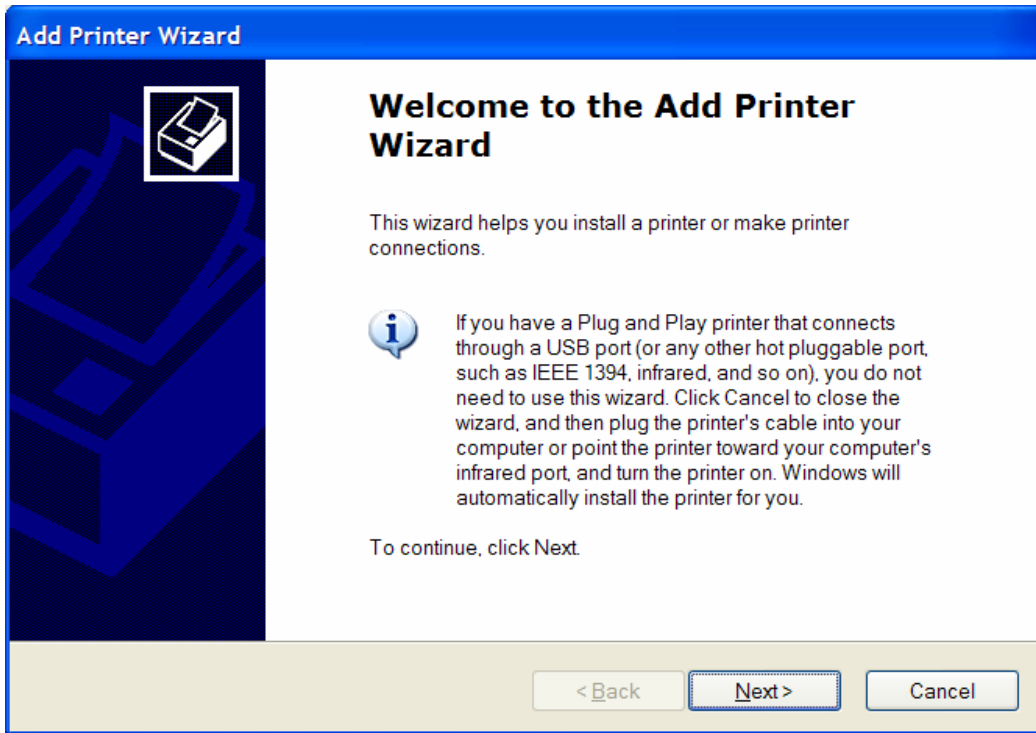
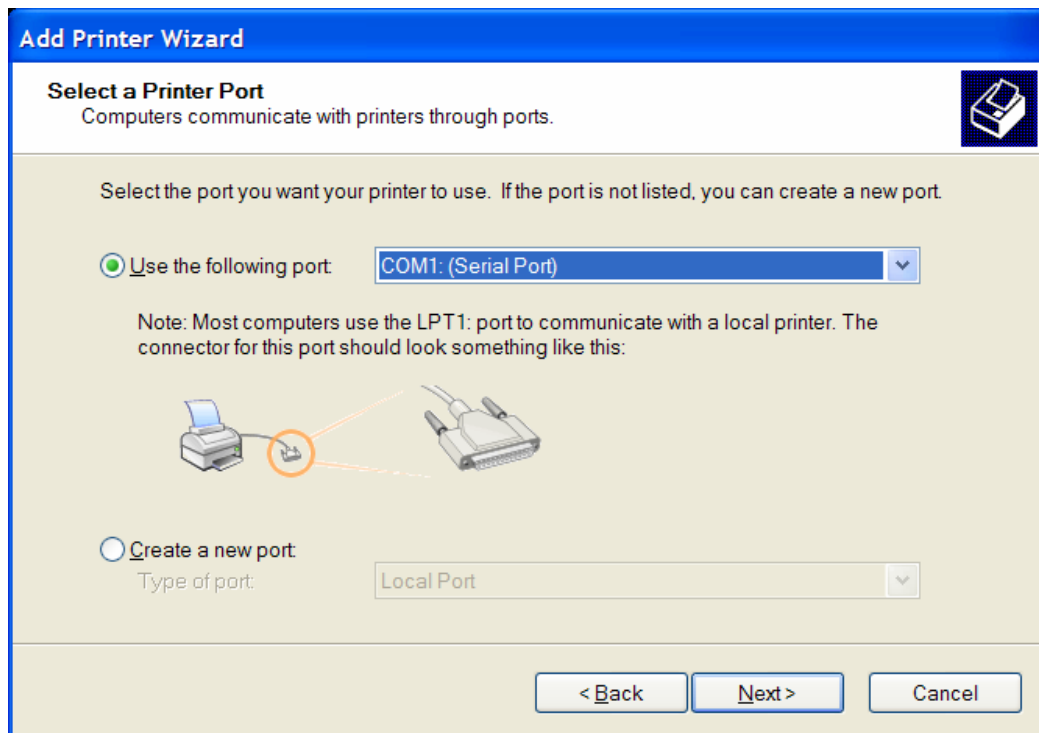


POS printer Setup

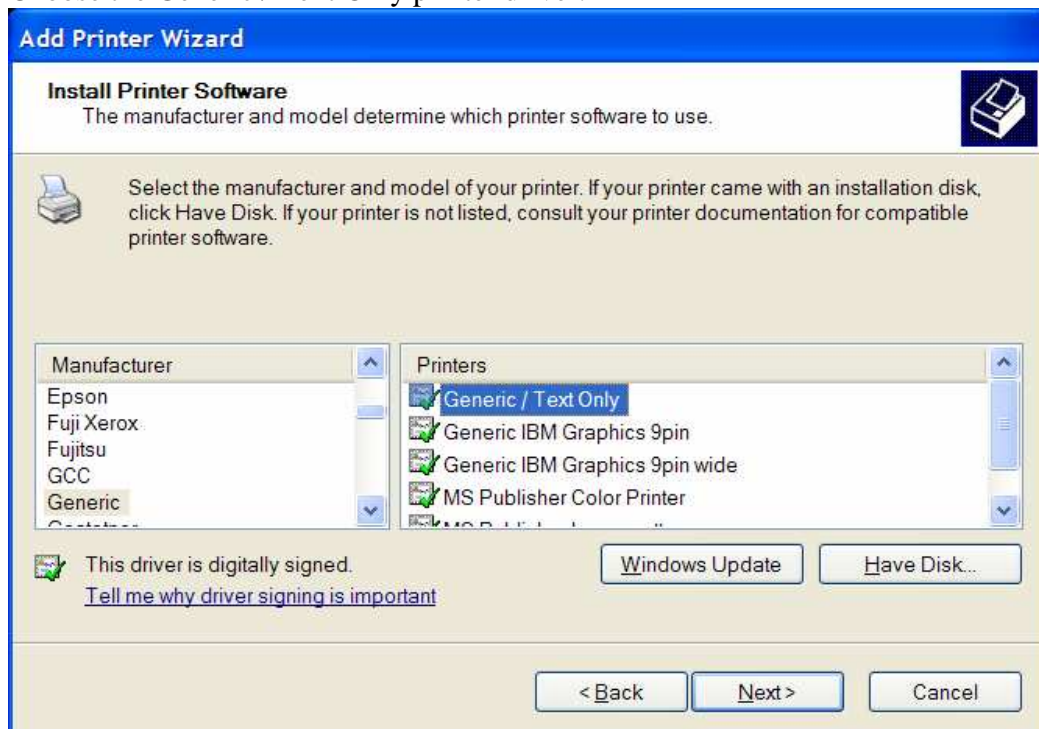
Use the Windows Printers and Faxes screen to add a new printer.



Choose the printer port the printer is connected to, it could be LPT1, Com1 or USB.



Choose the Generic / Text Only printer driver.



Once done, Ask it to print a test page by pressing on PRINT TEST PAGE Button, if it prints, you can now go to Retail Man and setup the printer there. **Make sure not to make the POS printer as your default printer**, if you do, the reports will not be printed properly, instead you will get only half or the report page showing, you must use a standard printer (either Laser or inkjet as you default Windows printer)

Go to MAINTENANCE SYSTEM SETUP > HARDWARE and enter the following:

The screenshot shows the 'System Setup' window with the 'Hardware' tab selected. The 'Screen Resolution' is set to 800x600. Under 'POS Printer', the printer is set to 'EPSON T88II' and the 'Windows Driver' is set to 'Generic / Text Only'. Other settings include 'Double Width On' (chr(27)+chr(33)+chr(32)), 'Double Width Off' (chr(27)+chr(33)+chr(0)), and 'Auto Cutter On' (chr(29)+chr(86)+chr(01)). The 'Customer Pole Display' section is currently unchecked. The 'Cash Drawer' section is also unchecked, but 'Cash Drawer Connected to' is checked.

Category	Field	Value
Screen Resolution	Resolution	800x600
	POS Printer	EPSON T88II
POS Printer	Windows Driver	Generic / Text Only
	Double Width On	chr(27)+chr(33)+chr(32)
	Double Width Off	chr(27)+chr(33)+chr(0)
	Auto Cutter On	chr(29)+chr(86)+chr(01)
	Graphics Support	<input type="checkbox"/>
Customer Pole Display	<input type="checkbox"/> Customer Pole Display	
	Pole Display	Pole Display
	Home Code	chr(11)
	CR Key Code	chr(13)
Cash Drawer	<input type="checkbox"/> Cash Drawer	
	<input checked="" type="checkbox"/> Cash Drawer Connected to	

Notice to choose the Windows Driver as the driver you created above. Then save, this will now use the Epson Pos printer as your receipt printer.