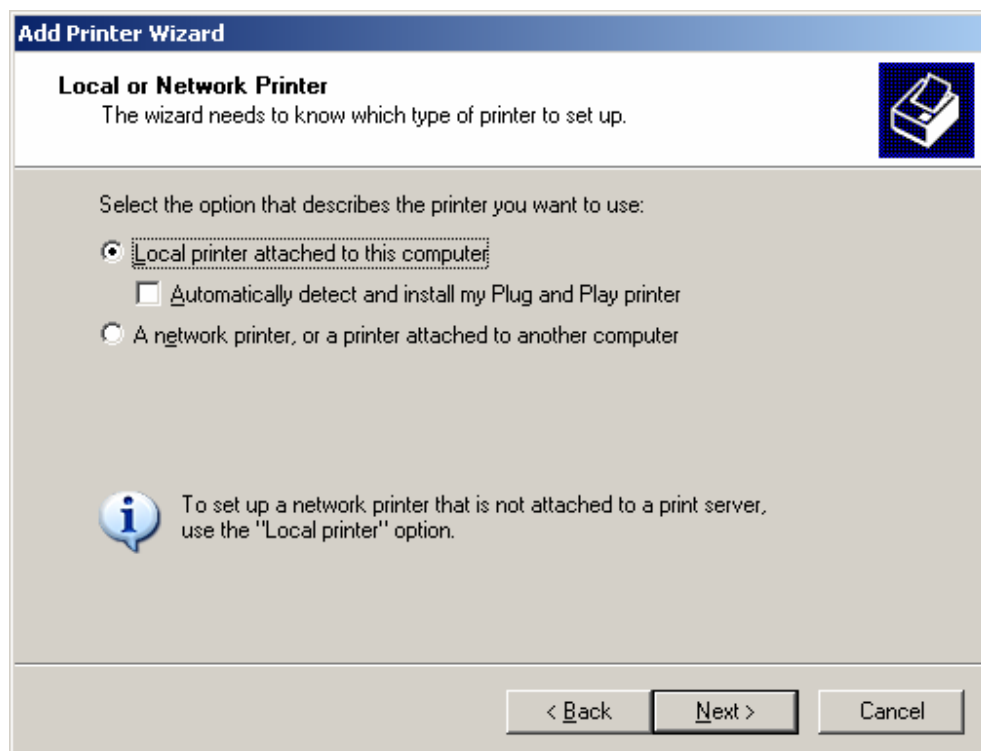


Pole Display

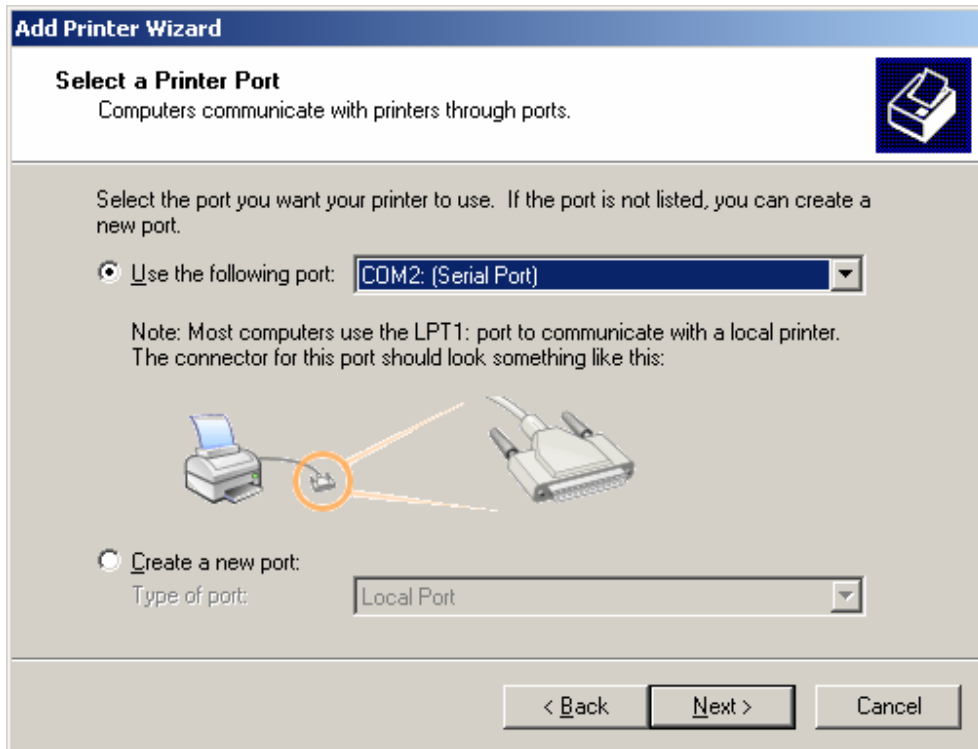
if you have a pole display, it will normally connect on the serial port, you must create a device under CONTROL PANEL > PRINTERS and choose GENERIC PRINTER with the correct com port and com port settings. Same applies to the cash drawer if it is a serial device.

To setup the Pole Display with a serial interface, follow the following steps:

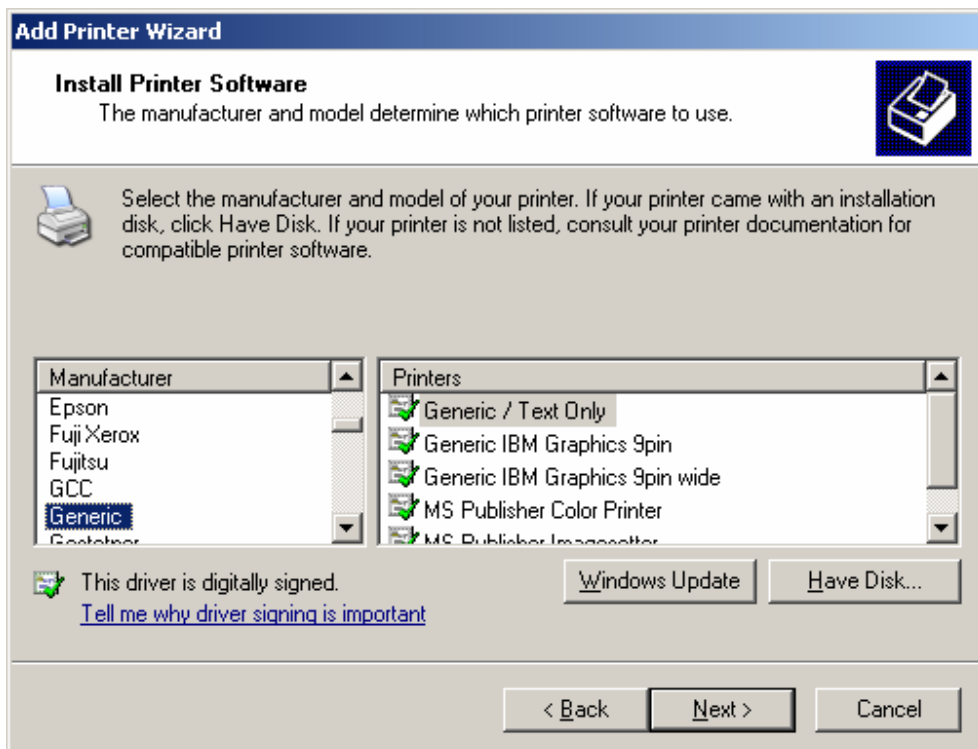
Click START > SETTINGS > PRINTERS > ADD NEW PRINTER



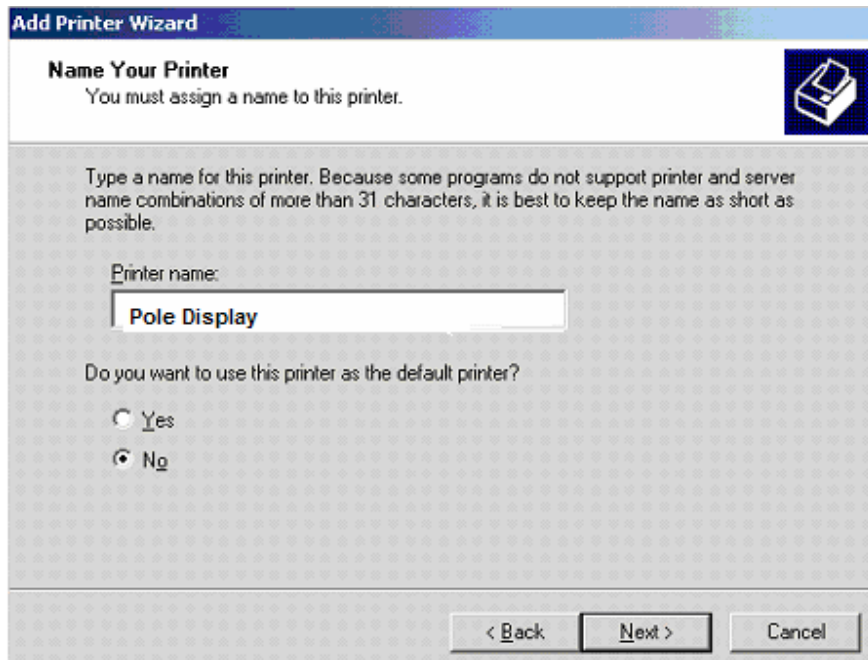
Choose the com port used by the pole display.



Choose the GENERIC / TEXT Printer



Then rename to the device name used. Once this is done, the device name should appear in the HARDWARE Setup screen.



Once this is done, go to MAINTENANCE > SYSTEM SETUP > HARDWARE and adjust the settings as shown in the following screen.

