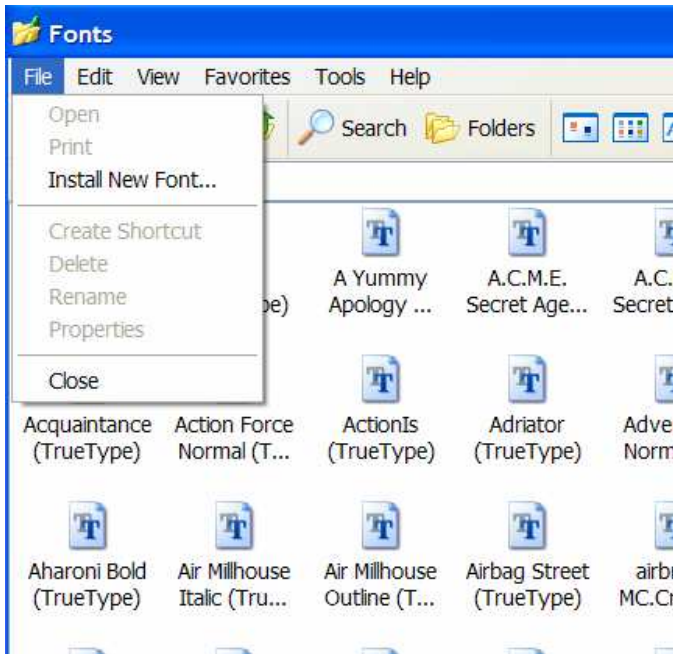
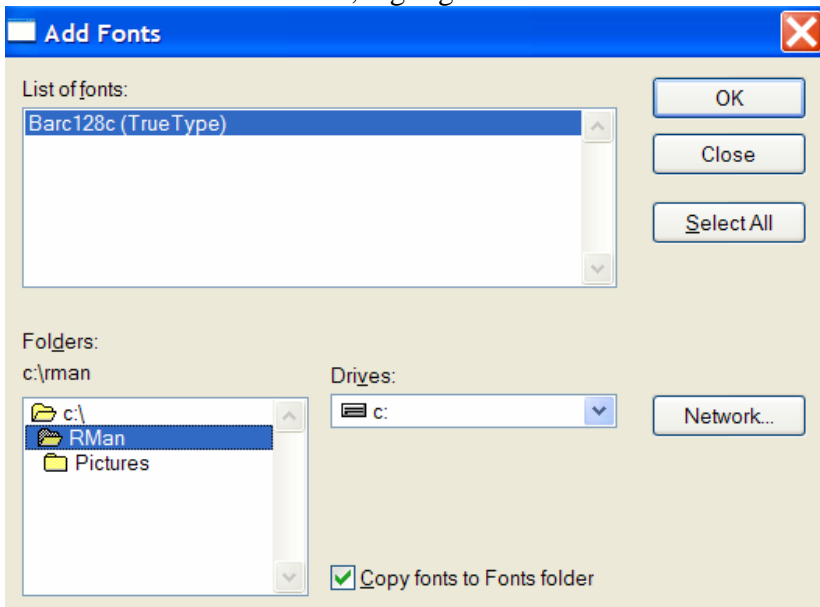


To Setup the barcode font to work with Retail Man / Ezi Accounting

Click on Windows START > SETTINGS > CONTROL PANEL > FONTS



Choose Install new font, then change the folder to C:\RMAN or C:\EZI_W (depending on which software you are using) Double click on the folder, you will notice a font Barc128c (True Type) appears in the List of Fonts window, highlight that font and click OK



The system will tell you the font is already installed,



click OK, then click Close, This will install the new font properly. You can now view or print barcodes from the software.